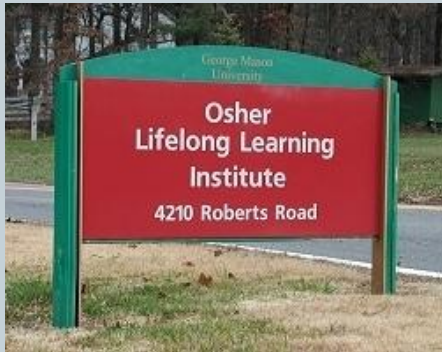




OLLI 2011



PROGRESS AND CHALLENGES



Growing and Changing



- 986 members
- 625 in the Fairfax/Burke/Springfield area
- 120 members in eastern Loudoun County
- 235 members in western Fairfax County
- 892 took classes during the spring term
- 71% registered online
- Typical member takes between 3-5 courses per term

Celebrating our 20th anniversary



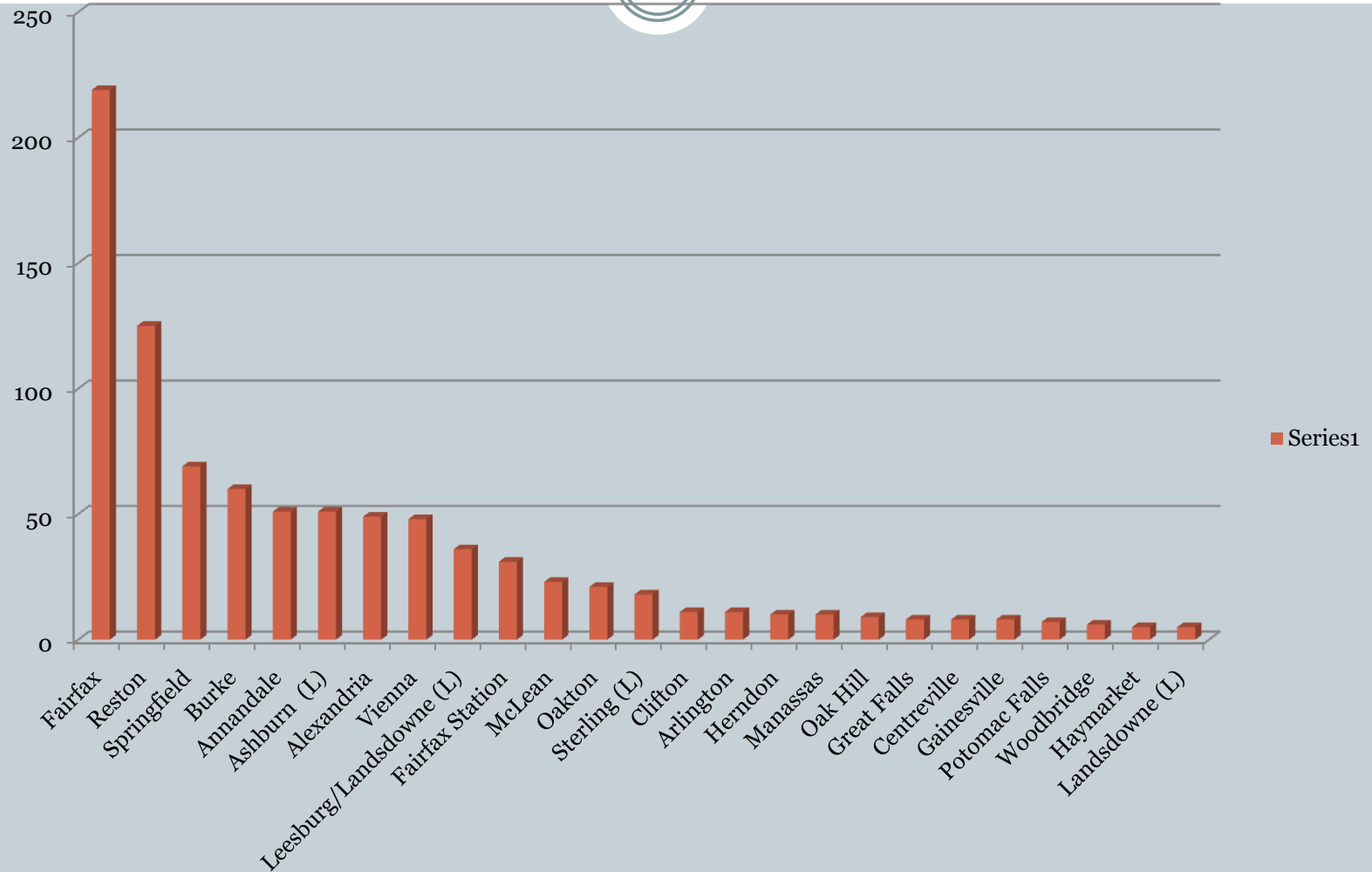
OLLI began as the “Learning in Retirement Institute” in 1991. George Mason has been a strong partner for 20 years.

This year, we are honoring this occasion by:

- Presenting a gift to the university – via the Office of Military Services
- A special luncheon on September 16th for members
- A breakfast reception for Mason leadership on October 21st

Don't miss “Beauty and Her Beasts” on June 2nd!

OLLI MEMBERSHIP Distribution



Our relationship with George Mason is strong



FACILITIES:

- ❖ Exclusive use of Tallwood
- ❖ Shared use of the Mason building in Loudoun
and
- ❖ NEW! The Tallwood Cottage provided additional space for ...
 - ✦ Small classes (10-20 participants)
 - ✦ Cooking demonstrations and classes
 - ✦ Audio Visual storage and maintenance

PROGRAM:

Support from the faculty grew over 20% --

- ❖ 85 faculty members provided lectures or courses
- ❖ New participation by the Mason libraries

The Program



During 2010, there were ...

- ❖ *333 “courses” – meaning multi-week, generally four or eight weeks*
- ❖ *65 “special events” – meaning one-time lectures or presentations*
- ❖ *26 “trips” – meaning visits to sites or performances*

Who taught what?



“Speakers” make a presentation or lecture as part of a course or special event

2010 – Speakers:

116 George Mason faculty (27%)
190 Community (44%)
128 OLLI members (29%)

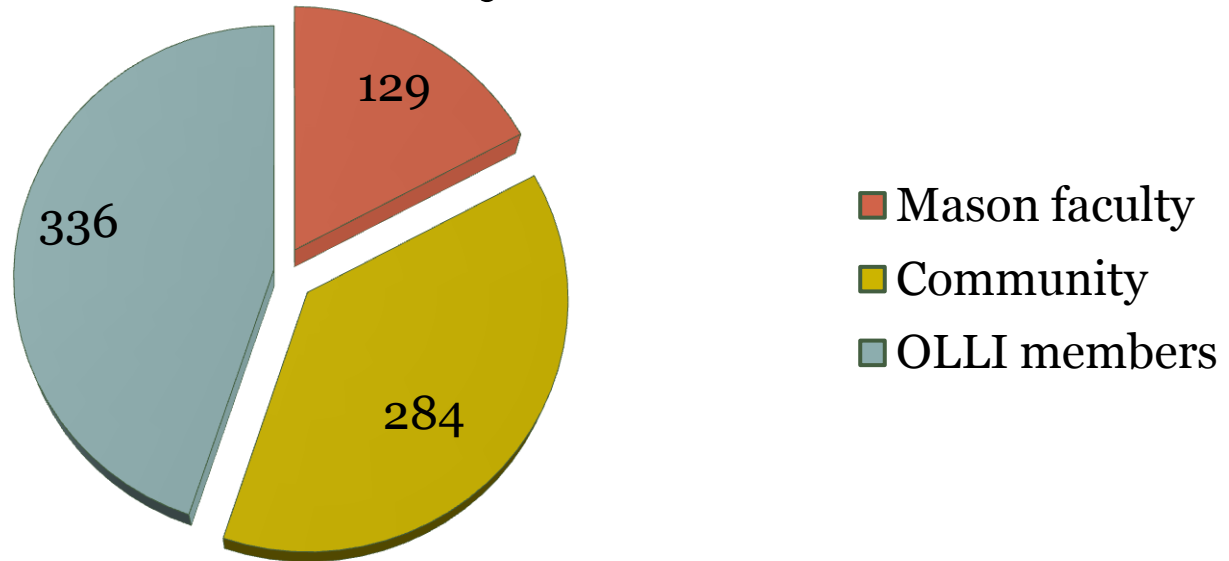
“Instructors” teach a full course (multiple weeks)

2010 – Instructors:

13 George Mason faculty (4%)
94 Community (30%)
208 OLLI members (66%)

Where do our teachers come from?

2010 OLLI Faculty





The OLLI Finances



INCOME DURING 2010:

DIVIDEND AND INTEREST INCOME	\$ 793
OSHER ENDOWMENT REVENUE	\$ 34,726
OSHER GIFT/GRANT	\$ 10,000
	(PLUS \$15,000 SET-ASIDE)
MEMBERSHIP DUES - REGULAR	\$ 302,630
MEMBERSHIP DUES-LOM	\$17,000
<i>TOTAL FUNDING</i>	\$365,149



The OLLI Finances

EXPENDITURES DURING 2010:

PAYROLL AND RELATED TAXES	\$201,150
GENERAL AND ADMINISTRATIVE FACILITIES	\$58,000
EQUIPMENT	\$39,100
PUBLICATIONS	\$17,450
PROGRAM	\$13,050
MEMBER SERVICES	\$4,500
HOSPITALITY	\$1,400
DEVELOPMENT	\$750
TOTAL EXPENSES	\$366,400



The OLLI Finances



**CASH RESERVES AT THE END OF THE
YEAR WERE \$117,000**

**(THIS FLUCTUATES THROUGHOUT THE YEAR, REACHING
A LOW POINT DURING THE SUMMER PRIOR TO FALL
REGISTRATION)**

OTHER AVAILABLE FUNDS:

- **RAINY DAY FUND -- \$50,000**
- **FUTURE CONTINGENCY FUND -- \$15,700**



The OLLI Finances

FRIENDS OF OLLI

DONATIONS DURING 2010: \$32,753

EXPENDITURES DURING 2010: \$32,325

• Scholarships to GMU	\$12,000.00
• Donation to Fall for the Book	1,000.00
• Special Publications (Fairfax Ink/Poets of Tallwood)	399.00
• Reupholstering of Chairs	3,330.00
• Landscaping (from designated donations)	362.47
• Financial Assistance	1,918.00
• Piano for Loudoun Site	5,796.00
• Donated Monitors from WACUG	357.00
• To Future Contingency Fund	750.00
• A/V Equipment-Tech Project 9	6,413.00

Challenges



- Maintaining and strengthening our outstanding program – volunteers!
- Recruiting, nurturing, rewarding faculty – new blood, more support
- Strengthening the bonds that unite members from different OLLI sites
- Parking and accessibility at Tallwood -- \$\$\$

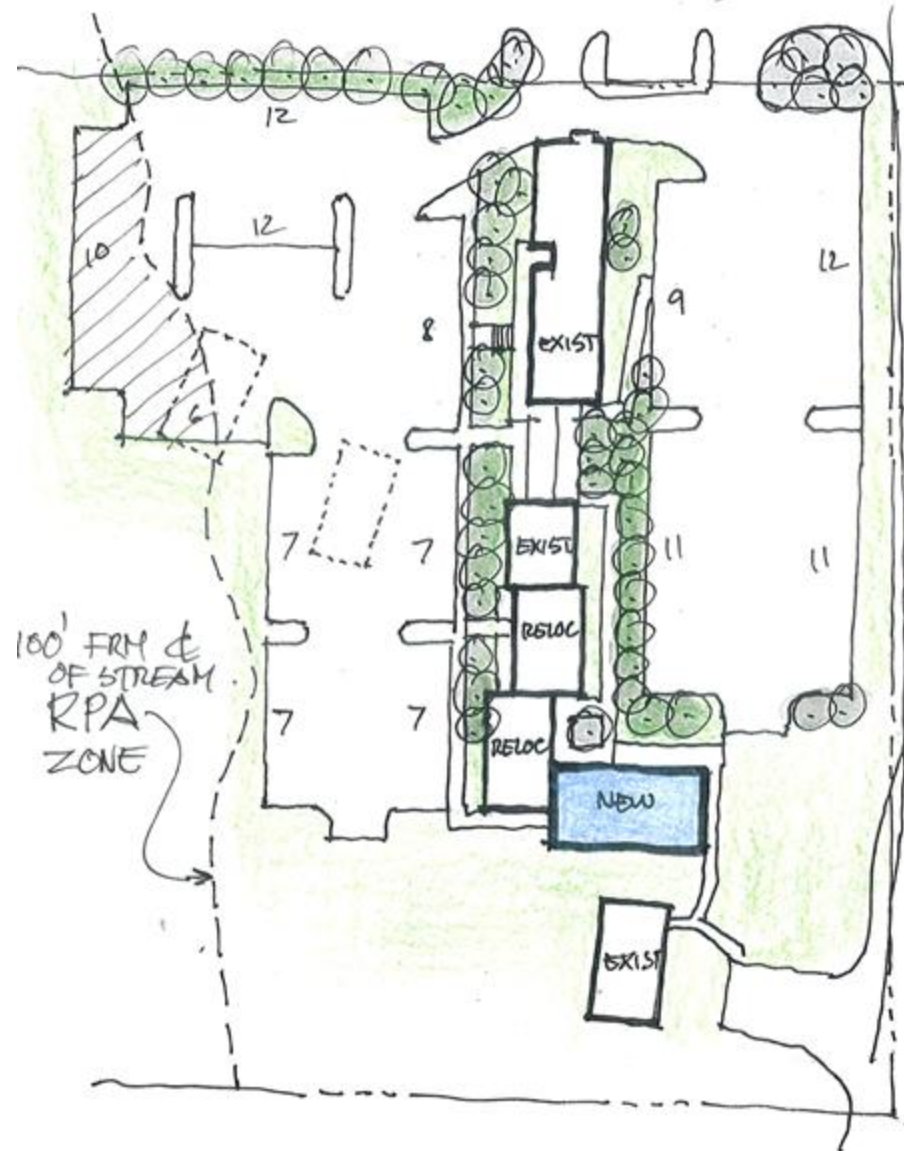
Faculty Development Modules



	<u>Topic/Module</u>
101	So You are Thinking About Teaching?
102	Characteristics of Adult Learners
103	Planning for Successful Teaching
104	OLLI Teaching Formats
105	Resources for Teaching
201	Presentation and Q&A Skills
202	Using Audio-Visual Equipment
203	PowerPoint Basics
204	PowerPoint – Advanced Techniques
301	How to Facilitate a Class
302	How to Develop a Multi-Speaker Course
401	Teaching Seminar – Honing Your Skills

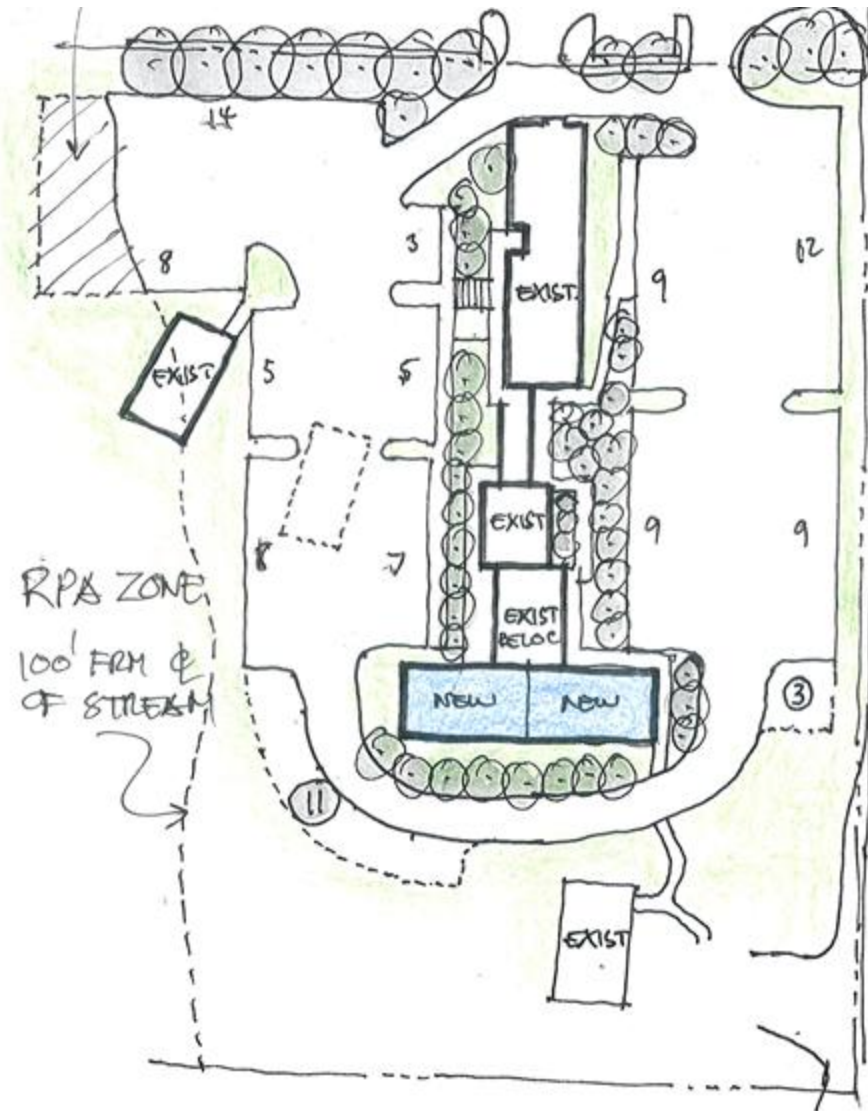
Tallwood Parking and Accessibility

Plan "A"



Tallwood Parking and Accessibility

Plan "B"





Great minds never stop learning