

[Print a condensed .pdf copy](#) of this newsletter, two web pages per sheet of paper.



[Website](#) [What's New](#) [Catalog](#) [DocStore](#) [Facebook](#) [Officials](#) [Member Portal](#) [Contact Us](#)
[Loudoun Newsletter](#)

Morris Kaplan, Language Instructor, Introduces Basic Spanish Words and Phrases as Preparation for Later Spanish Courses, Spring 2022

May 6, 2022

Editor of the Week: Sheri Siesseger

Table of Contents

- [Alerts & Notices](#)
- [Report from the 2022 OLLI National Convention](#)
- [New Class Added for Spring Term](#)
- [Non-Fiction Book Club to Meet and Plan](#)
- [Reston Book Club to Hold Spring Luncheon](#)
- [OLLI Photo Club Community Outreach – Rebuilding Together](#)
- [Notes from the Stratford Hall Field Trip](#)

- [OLLI Photo Club Members' Works Selected for Annual Joseph Miller Abstract Exhibit](#)
- [Poet's Corner](#)
- [Arts & Music at George Mason](#)
- [Meetings & Clubs](#)
- [About OLLI E-News](#)

Alerts & Notices

- *Note:* Because of weather uncertainty, Fairfax has changed the location of Fairfax Uncorked (Mason jazz event, Saturday May 7, 3:30-8:30). New location is Sherwood Center, 3740 Old Lee Highway, Fairfax.
- The next issue of *OLLI E-News* will be published Friday, May 13; regular deadline for submission of items is Tuesday, May 10, at 6:00.

[Back to Top of Page](#)

From the Desk of the Executive Director Report from the 2022 OLLI National Convention



By Jennifer Disano, Executive Director

The 14th annual Osher Lifelong Learning Institutes National Conference was held April 25-27 at the OMNI Interlocken Hotel in Broomfield, Colorado. Board member Zachary Teich and I attended the event. The conference featured excellent speakers and great networking opportunities for the 125 OLLIs across the country to learn, share best practices, and collaborate. Over the three-day conference, we covered topics such as fundraising, effective marketing techniques, diversity, equity, inclusion, and collaborating with retirement communities.

Our benefactor, Bernard Osher, and Osher Foundation President Mary Bitterman provided words of encouragement. During the opening session a contest consisting of OLLI "Woo Hoos" was conducted to highlight OLLI events, ideas, and programs across the network. In the first round of winners, OLLI Mason gained recognition for its innovative "Caste," an eight-week course coordinated by Terri Feldmayer and Gloria Loew of the Humanities and Social Sciences program planning group. It was the selected winner! The prize was an iPad, to be added to our technology inventory for use in our classrooms.

Fundraising expert Diane Lebson, co-founder of Evergreen Philanthropic Solutions and author of *For a Good Cause*, addressed the group. Ms. Lebson's presentation "Raising money you need for the critical work you do," spoke about donor engagement. Dr. Louise Aronson MD, MFA, Professor UCSF Division of Geriatrics and author of *Redefining Aging, Transforming Medicine, Reimagining Life*, spoke about ageism and the perceptions we have about words that define age.

View our full report at [this link](#).

[Back to Top of Page](#)

New Class Added for Spring Term



By Shannon Kim Morrow, Program Associate

[Register now](#) for this class newly added to the **spring** term:

981Z Notes from the Border (Zoom class)

Friday, May 13, 1:00–2:30,

Instructor: Velida Kent

This special presentation on the humanitarian crisis along the Polish-Ukrainian border, sparked by Russia's invasion of Ukraine, will cover the instructor's journey from Arlington, VA, to Lviv, Ukraine, and to Poland. The instructor will describe border activities during Europe's largest humanitarian crisis since WWII, sharing anecdotes of how she and others helped those fleeing Ukraine—refugees who have been crossing the border seeking refuge and new beginnings. She will share two of the many videos recorded by her daughter while they were at the border.

Diaries in Exile

- Episode 1. First Day in Przemysl
- Episode 9. Sveta. Day 17

Velida Kent, a Crimean Tatar American, received her MEd from George Mason University. She was born and grew up in Uzbekistan where her grandparents/parents were exiled from Crimea by Stalin in 1944. She and her family have lived in Poland, Thailand, and Ukraine. She and her husband, a Foreign Service officer, live in Arlington.

[Back to Top of Page](#)

Non-Fiction Book Club to Meet and Plan



By Barbara Wilan, Coordinator of the Non-Fiction Book Club

Please join us at the Loudoun campus at Signal Hill for a live meeting of the Non-Fiction Book Club on Tuesday, May 10, from 2:15-3:40. We'll meet each other and choose books for the summer session. I'm looking forward to seeing you there.

[Back to Top of Page](#)

Reston Book Club to Hold Spring Luncheon

By Nancy Scheeler and Luci Martel, Reston Book Club Coordinators



The Reston Book Club will meet in person for its spring luncheon on Friday, May 13 at 12:15, at Café Montmartre in Lake Anne, Reston. No RSVP is necessary—just show up. The luncheon will be outside, weather permitting. We look forward to seeing you there.

[Back to Top of Page](#)

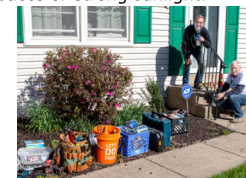
OLLI Photo Club Community Outreach – Rebuilding Together



By Dan Feighery, Photography Club Founding Member

Over the past several years, members of the OLLI Photography Club have supported various community activities. One effort, with an organization called Rebuilding Together, helps repair and upgrade homes for health, safety, and accessibility issues at no charge to the homeowner. A bonus for photographers is a chance to practice or learn new techniques in tight spaces or strong sunlight.

Some Rebuilding projects are illustrated here. The photo at the right shows tool bags lined up for the inside work while two volunteers prepare to install a metal handrail. In another example, at the left, a volunteer installs grab bars in a small narrow bathroom. Such shower grab bars are typical modifications helpful to people as they age.



For complex projects, a yard may turn into a workshop, or perhaps become the best place to install a metal wheelchair ramp for a homeowner with mobility limitations. The Rebuilding Together group prioritizes aid to seniors, people living with disabilities, families with children, and veterans. More specifics can be found through a quick internet search (e.g., [Rebuilding Together](#)).



[Back to Top of Page](#)

Notes from the Stratford Hall Field Trip



By Carolyn Kramer, OLLI Member

On April 1, 26 OLLI members boarded an early-morning bus to Stratford Hall Mansion in Stratford, VA. Our day was amazing! At the visitor center, we saw a high-quality exhibit of artifacts, and each of us received a full-color guidebook of photos and details about each displayed item. Since ours was a

V.I.P. tour, the docents brought out two items rarely shared with visitors, one being a hat worn by Robert E. Lee during the Civil War.

We spent some time at the carriage house viewing the carriage collection, then went to the "Great House" of



Photo by Emily Clarke 4/1/2022



Photo by Carolyn Kazemi 4/1/2022

Stratford Hall, birthplace of Robert E. Lee. After examining the exterior brickwork (which in itself was fascinating!), we toured rooms of the house and learned some interesting history.

Dr. Kelley Deetz and the other docents conveyed their enthusiasm for their jobs and their passion for the history of the place. We visited the gift shop, then had lunch before departing. All in all, it was a fine trip, with many positive comments from OLLI members. Dr. Deetz thoroughly enjoyed our group, particularly our

unwavering attention span and level of engagement.

[Back to Top of Page](#)

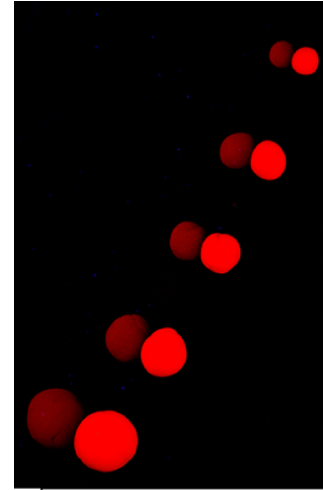
OLLI Photo Club Members' Works Selected for Annual Joseph Miller Abstract Exhibit



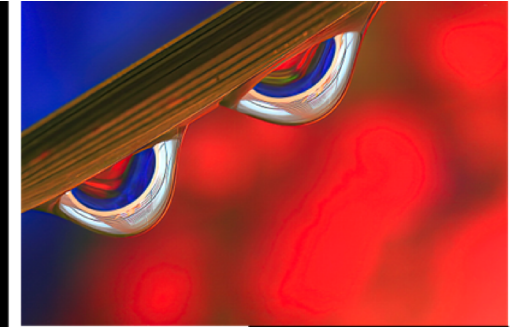
By Dan Feighery, Photography Club Founding Member

Works of two OLLI Photography Club members have been selected for the 12th Annual Joseph Miller Abstract Photography exhibition. This year's exhibit is open from May 1-31; it is virtual and can be viewed by [clicking here](#).

Candidate images must start out as photographs from a camera and can then be artistically manipulated if desired. Over the last eleven years this exhibit has attracted entries from international and American photographic artists. Images accepted from OLLI members this year (shown below) are "Exponential" and "Seeking" by Dan Feighery, as well as "Teapot Spiral" and "American Proud" by Ed Marion. Dan's approach is to find something looking through the lens for a more simplified image, whereas Ed's approach is to amplify the inherent feeling of an image with more artistic adjustments.



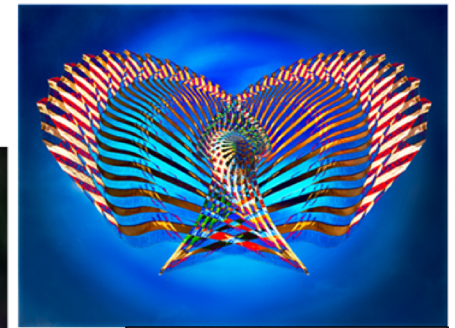
Exponential: D Feighery



Seeking: D Feighery



Teapot Spiral: E Marion



American Proud: E Marion

[Back to Top of Page](#)

Poet's Corner

Courtesy of the Poetry Workshop

The Philharmonic's Spring Revival

Dogwoods pink with birthday frosting
Maples thick with fresh lime plumes
Sky dressed in soft sail cloth blue
Lilac cones dipped in creamy lavender
Dandelion suns pulse rays of gold

Wind conducts a symphony of color
Light triumphantly resounds
Come, Be With Us On This Day Of Days!
Susan Rexroad

According to Dictionary.com: "The word philharmonic literally means 'music loving.' The English word is modeled on French or Italian forms ultimately based on the Greek roots *philos* (loving, dear) and *harmonia* ('music, agreement, joint'). *Philharmonic* is found in English by the 1740s, used of largely organizations dedicated to their love of music, e.g., *philharmonic society*."

According to Wikipedia; "A revival is a restaging of a stage production after its original run has closed. New material may be added."

According to Dictionary.com: "A revival is an evangelistic service or series of services for the purposes of effecting a religious awakening...."

[Back to Top of Page](#)

Arts & Music at George Mason

Performances May 6 through May 16



By Shelly Gersten, OLLI E-News Staff Writer

Current vaccination policy for the Center for the Arts and Hylton Performing Arts Center is summarized as follows:

Beginning May 2, audience members will not be required to show proof of vaccination or a negative Covid-19 test result for most events **except** when required by the event organizer or artist. If proof of vaccination or a negative Covid-19 test result is required for a specific event, it will be indicated on the webpage with event details. **Face coverings continue to be required at all events.**

Specific requirements are detailed and any future policy changes may be found here: <https://cfa.gmu.edu/plan-your-visit/vaccination-policy>.

Dr. Linda Apple Monson produces a periodic "Notes from the Director." This email is full of interesting online performances by the students and faculty of the School of Music. If you would like to receive these bulletins, just send an email to Brianna Schoen at bschoen@gmu.edu. Also, the Center for the Arts has a website, [Mason Arts at Home](#), which has a calendar of online events and access to many past performances. Information can also be found at [CFA ticket purchase page](#), [Center for the Arts YouTube Channel](#), or the [Hylton ticket purchase page](#).

[Back to Top of Page](#)

At the Fairfax Campus Venues

Mason Symphony Orchestra Concert

Sun, May 8, 7:00
Proof of vaccination required for this event.
Concert Hall
Admission: \$20, \$15 seniors, \$5 students.

Fairfax Symphony Orchestra: Beethoven *Symphony No. 9*

Sat, May 14, 8:00
Performed with the Fairfax Choral Society and Morgan State University Choir.
A pre-performance discussion will take place in the Concert Hall one hour prior to the performance.
Concert Hall
Admission: \$65, \$55, \$40.

[Back to Top of Page](#)

Mason Student and Faculty Performances

(see music.gmu.edu for additional student recitals)

Mason School of Theater: A Concert Presentation of *The Boy Detective Fails*

Fri, May 6, 8:00
Sat, May 7, 2:00 and 8:00
Proof of vaccination required for this event.
Concert Hall
Admission: \$20, \$10 seniors.

Mason Dance Company: *Spring: Dance Innovations*

Fri, May 6, 8:00 (program A)
Sat, May 7, 8:00 (program B)
Sun, May 8, 2:00 (program B)
Sun, May 8, 7:00 (program A)
Proof of vaccination required for this event.
Harris Theatre
Admission: \$15, \$10 seniors.

Piano Chamber Concert

Fri, May 6, 8:00
deLaski Performing Arts Building, 3001
Admission: Free.

Mason Symphony Orchestra and University Choirs

Sun, May 8, 7:00
Concert Hall
Admission: \$20, \$15 seniors.

Spring Chamber Ensembles Concert

Mon, May 9, 6:30

deLaski Performing Arts Building, 3001
Admission: Free.

Dewberry School of Music Student Honors Recital

Sun, May 15, 3:00

Harris Theatre

Admission: Free but please register at [this link](#).

[Back to Top of Page](#)

At the Hylton Center (Manassas Campus)

Gallery Exhibit by Jayne Matricardi: *Motherscape*

Continuing through May 22

Buchanan Partners Art Gallery

Admission: Free.

Manassas Symphony Orchestra: *Reflection and Hope*

Sat, May 7, 7:30

Merchant Hall

Admission: \$20, \$16 seniors.

Northern Virginia Ballet & Academy of Russian Ballet: *Sleeping Beauty*

Sun, May 8, 2:00 and 6:00

Merchant Hall

Admission: \$30, \$20 seniors.

American Festival Pops Orchestra: *Broadway's Best*

Sat, May 14, 8:00

A pre-performance discussion begins one hour prior to the performance.

Merchant Hall

Admission: \$60, \$51, \$36.

[Back to Top of Page](#)

For further details on any of the above events, see the [CFA event calendar](#) and the [Hylton Center event calendar](#).

[Back to Top of Page](#)

Please note: Although some physical meetings for clubs and activities are canceled, some may be meeting in person or in a hybrid mode—both in person and online. OLLI events and activities meeting online bear the identification "Z" in their course or event number. Refer to the university's [coronavirus website](#) for official university updates; also, check the [OLLI calendar](#) and daily schedule email for event information.

The following list covering the next two weeks is extracted for your convenience from the master online calendar maintained by the office. The list is accurate as of mid-week but for the most up-to-date information, please view the latest forecast of coming events on our website (News/[OLLI Calendar](#)). *Note: All OLLI members are welcome at, and encouraged to attend, meetings of the Board of Directors, committees and resource groups, kick-off coffees, etc. The OLLI office has sent (or will send) emails with links and meeting passwords to club members; you may also log in at the [member portal](#) and click on ZOOM CLASS LINKS.*

Sat May 7	10:30 am	Tai Chi Club
Tue May 10	2:15 pm 4:30 pm	Loudoun Non-Fiction Book Club Tai Chi Club
Wed May 11	1:45 pm 4:00 pm 4:00 pm	Bridge Club Mah Jongg Club Spanish Club
Thu May 12	4:30 pm	Tai Chi Club
Fri May 13	9:15 am 9:30 am 9:30 am 11:00 am 11:00 am 2:00 pm 2:30 pm	Recorder Consort Photography Club Craft and Conversation Classic Literature Club Homer, etc. Cooking Club Tallwood Book Club
Sat May 14	10:30 am	Tai Chi Club
Tue May 17	4:30 pm	Tai Chi Club
Wed May 18	1:30 pm 1:45 pm 2:00 pm	Mah Jongg Club Bridge Club Memoir and More Writing Group
Thu May 19	4:00 pm 4:30 pm	Reston Book Club Tai Chi Club
Fri May 20	9:15 am 9:30 am 11:00 am 11:00 am	Recorder Consort Craft and Conversation Classic Literature Club Homer, etc.
Sat May 21	10:30 am 1:00 pm	Tai Chi Club Personal Computer User Group

[Back to Top of Page](#)

Meetings & Clubs

About OLLI E-News

OLLI E-News was created by Rod Zumbro, who served as its editor from 2005 to 2013.

Editorial Staff

Chief Editor: Paul Van Hemel

Associate Editor: David Gundry


Weekly Editor Team: David Gundry, John Nash, Sheri Siesseger, Paul Van Hemel

Proofreaders: Rebecca Jann, Susan Van Hemel, Linda Randall, Tom Appich, Jane Hassell

Submissions: Members are encouraged to submit letters to the editor, letters to Ms. Ollie Ettakit (on etiquette matters), OLLI-related news items, articles, and photos. Submit material to: ollienewseditor@gmail.com.

Deadline: Tuesday, 6:00, for that week's issue (Monday, 6:00, for letters to the editor); early submissions are greatly appreciated. Please limit articles to about 250 words.

Search E-News: You can view past issues of *OLLI E-News* at [FNews Archives](#). To search the content within issues, use [Search](#) or enter your search term(s) in [Google](#) followed by "site:oli.gmu.edu/" without the quotes.

 An Amazon Smile Link appears here. When you shop using the Smile link designating OLLI as your charitable choice, we'll receive a 0.5 % donation, based on the value of your purchase.

[Back to Top of Page](#)