

Trouble Viewing this Email or Using Table of Contents Links:

[View this email in your browser](#)



[Website](#) [Catalog](#) [DocStore](#) [Facebook](#) [Officials](#) [Member Portal](#) [Contact Us](#)



**Green Spring Garden Tour and Tea, June 2**

## June 16, 2023

Editor of the Week: John Nash

### Table of Contents

- [Alerts & Notices](#)
- [OLLI President's Message June 16](#)
- [Summary of Board of Directors Meeting, June 2](#)
- [Wednesday Team Bloch Conversation – June 21](#)
- [Member Achievement](#)
- [Photo of the Month](#)
- [Poet's Corner](#)

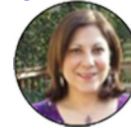
- [Arts & Music at George Mason](#)
- [Meetings & Clubs](#)
- [About OLLI E-News](#)

### Alerts & Notices

- *Reminder:* Mason Jazz Camp is June 19-23. [Click here](#) for details from the June 2 issue of *E-News*. Click [this link](#) for news on the artists and associated free concerts.
- The next issue of *OLLI E-News* will be published Friday, June 23; the regular deadline for submission of items is Tuesday, June 20, at 6:00.

[Back to Top of Page](#)

### OLLI President's Message June 16



*By Lillian Brooks, President*

The last year as OLLI President has been a busy one. Our classes and instructors remain at the highest level, and the staff and OLLI volunteers work hard to keep it that way. But sometimes it seems like we are still climbing out of COVID and I wonder when the long-term effects of that terrible time will ever end. One of the impacts on all the OLLI programs across the country has been the drastic drop in membership. We are doing better than most, but we still lost 200 members in the last few years. As you already know, if this trend keeps up, it will have a dramatic impact on our sustainability as we look to the future. It calls for help from each one of us to step up our efforts to bring in new OLLI members.



One of the initiatives that we revived in the last year is travel. It was our hope that exciting travel opportunities, domestically and internationally, would help us recruit and retain members. We thought that this would be a great opportunity for OLLI members to travel with friends and experience a fun and educational adventure together. We set up a domestic trip to [California](#) and the surrounding areas and a trip to [Iceland](#). Iceland was one of my favorite trips, but I never got to see the Northern Lights. This trip in

December would make it more likely than not that there would be an opportunity to see the Northern Lights. The California trip consists of many other discoveries that most of us who have been there may not have experienced.

The response so far for Iceland is growing, but we hope to have more members sign up for that wonderful trip soon. This is the reason I feel that we needed some feedback from the members on how we can enhance this program. I think we do need to bring back the travel committee to find ways to encourage OLLI friends to talk to their other OLLI friends and plan to go together on these excursions. They would be trips that you, the membership, select. Please take this short [survey](#) so that we can get your feedback on this topic. I am also looking for volunteers to be part of the travel committee. Please consider serving on the committee and let me or Jennifer know of your interest.



[Back to Top of Page](#)

## Summary of Board of Directors Meeting, June 2



By [Robert W. Heyer](#), **Board of Directors Secretary**

We thank Marilyn Harriman (Nominating Committee Chair) and her committee for identifying eight sterling candidates for the Board election. And we thank the OLLI membership for achieving a HIGH of 43% voting to elect five new members to the OLLI Board of Directors (BoD) to represent us. There are now 15 members on the Board, each serving a three-year term beginning in June of the year of their election. The Board meets on the third Friday of each month (except May, June, and December), in person and on Zoom, for all the members to listen in and hear what issues are being addressed. Comments and suggestions are appreciated at the end of each meeting, in person or on Zoom.

The new BoD met at Tallwood (TA-1) at 10:00 on June 2 in person and on Zoom. There were 13 of 15 Board members and eight guests attending.

### BOARD MEMBERS ATTENDING

- Term ending 2024: Toni Acton, Dick Crawford, Camille Hodges, Debby Mossburg (Zack Teich, absent)
- Term ending 2025: Lillian Brooks, Marilyn Harriman, Bonnie Nelson, Michele Romano, Carolyn Wyatt
- Term ending 2026: Peter Ansoff, Debbie Engleson, Bob Heyer, Harry Johnson (Emily Roudebush, absent)
- Executive Director: Jennifer Disano
- Meeting Assistant: Mike Emery

The meeting was called to order by Marilyn Harriman for the sole agenda item of BoD officer elections. Elections were conducted with the following results: Lillian Brooks (President), Dick

Crawford (Vice President), Bob Heyer (Secretary), and Debbie Engleson (Treasurer).

Lillian Brooks indicated that she expects to implement committees to address "OLLI Travel" and "Underserved Communities" over this Board year.



Members of the BoD will be involved in the following meetings:

- Finance Committee – June 7
- New BoD Member Orientation – June 15
- Next BoD Meeting – July 21
- BoD Retreat at Tallwood – September 7
- Fall Kickoff Coffee – September 14

With no further comments from the Board members or public, the meeting was adjourned at 10:20.

[Back to Top of Page](#)

## Wednesday Team Bloch Conversation – June 21



By **Brenda Bloch-Young and Doris Bloch**, **Co-Moderators**

### OLLI Weekly Conversations Continue –June 21, 2023

Continuing our Wednesday Conversations Series, Team Bloch (Brenda Bloch-Young and Doris Bloch) will moderate a Zoom discussion on June 21 at 4:00. Our chosen topic this week is "Indiana Jones."

The "last" Indiana Jones movie is due for release this month. Are you an Indiana Jones fan? Will you mourn the end of the series? Would you like to see Harrison Ford act in another epic, or who would you pick as a likely successor if Hollywood decides to extend the series?

Check your Daily Schedule for the Zoom link on Wednesdays and plan on some social time with Team Bloch.

[Back to Top of Page](#)

## Member Achievement



### New Book: *Grandma Sylvia's Guide to the Stock Market*



*By Sylvia Auton, Director of Staff Development, Fairfax County Public Schools, Retired*

At one time, people believed the sun revolved around the earth. Now we know better. At one time, people believed that successfully investing in the stock market required talent, training, and considerable time. Now some of us know better. If we invest simply—set and forget with low expenses—the market can make us millionaires (if we start young enough) or grow our assets at any age. This is due to the revolution in thinking about investing, just as the Copernican revolution changed our thinking about the sun and earth.

For years, I never wanted to invest—just put my money under the mattress. Then my husband died; I had to learn. My book is about my stories and others, some from OLLI. It's about my learning to invest simply, overcoming fears and anxieties. It's about feeling joy and comfort in understanding the market, learning about today's knowledge, and finding fun things about investing. It's a journey of discovery, a memoir, and a how-to guide for simple investing. I'm not a financial advisor, nor do I give financial advice, but I write what I believe is a great way to invest, based on some of the best thinking in the field.

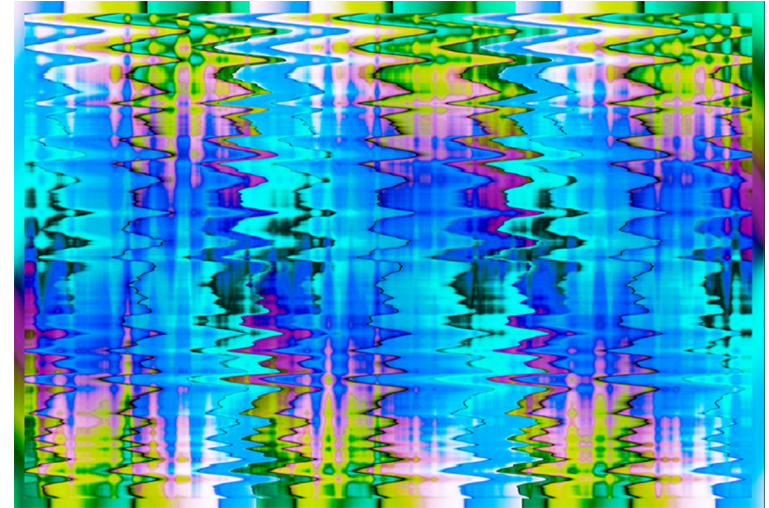
[Amazon Book: \*Grandma Sylvia's Guide to the Stock Market\*](#)

[YouTube: \*Grandma Sylvia's Investing for Beginners\*](#)

[Blog: \*Grandma's Investing for Beginners\*](#)

[Back to Top of Page](#)

## Photo of the Month



The June 2023 Photo of the Month theme was Abstracts. We selected Ed Marion's photo "Ripple Reflections" which may also be viewed at [this page](#). To view other photos by members of the Photography Club, visit the club's photo [website](#).

**-- By John Olsen and Edward Marion, Photography Club Co-Coordinators**

[Back to Top of Page](#)

## Poet's Corner

*Courtesy of the Poetry Workshop*

### Communion at Meadowlark Gardens

Rounding the path on a spring afternoon

A day after a soaking rain has left brownish puddles in low spots,

I encounter a small box turtle crossing the path.

I stop and so does the turtle...

Bending down, I lean toward him just close enough to get a good look without fully invading his space.

His reptilian face strains toward me, stretching his neck toward my open eyes, he poses the question...

—Friend or foe?

*Friend, definitely!*

—Anything for me?

*Only general goodwill and gratitude you're here.*

—No bugs or tasty greens?

*Sorry, no.*

We stare a few moments more...his ancient eyes winning the contest...

Reminding me of deeper primal pools of knowing.

*Sophia Elberti*

[Back to Top of Page](#)

## Arts & Music at George Mason

Performances June 17 through June 23



By Shelly Gersten, OLLI E-News Staff Writer

For tickets for either Center for the Arts Concert Hall (CFA) or Hylton Center, call 1-888-945-2468, buy tickets online through the event calendar (see links below), or visit the venue's box office. For more information, see the [CFA ticket page](#) or the [Hylton Center ticket purchase page](#).

Dr. Linda Apple Monson produces a periodic "Notes from the Director." This email is full of interesting online performances by the students and faculty of the School of Music. If you would like to receive these bulletins, just sign up at [this link to stay in touch](#). Also, the Center for the Arts has a website, [Mason Arts at Home](#), which has a calendar of online events and access to many past performances.

[Back to Top of Page](#)

### At the Fairfax Campus Venues

#### Melina's Dance Company Recital: *Creation*

Sat, Jun 17, 12:00 and 5:00

Concert Hall

Admission: \$15.

#### Mason Jazz Camp: The US Army Blues

Mon, Jun 19, 3:30

Concert Hall

Admission: Free.

#### Mason Jazz Camp: Mike Kamuf Little Big Band

Tue, Jun 20, 3:30

Concert Hall

Admission: Free.

#### Mason Jazz Camp: Warren Wolf

Wed, Jun 21, 3:30

Concert Hall

Admission: Free.

#### Mason Jazz Camp: Faculty Showcase

Thu, Jun 22, 3:30

Concert Hall

Admission: Free.

[Back to Top of Page](#)

### Mason Student and Faculty Performances

(see [music.gmu.edu](http://music.gmu.edu) for additional student recitals)

No Performances Scheduled

[Back to Top of Page](#)

### At the Hylton Center (Manassas Campus)

#### Virginia Dance Center: *Dancing Upon a Dream*

Sat, Jun 17, 12:00 and 5:00

Hylton Performing Arts Center, Merchant Hall

Admission: \$22.

#### PowerWorx Dance: *Power of Dance 2023*

Fri, Jun 23, 6:30

Hylton Performing Arts Center, Merchant Hall

Admission: \$20.

[Back to Top of Page](#)

For further details on any of the above events, see the [CFA event calendar](#) and the [Hylton Center event calendar](#).



[Back to Top of Page](#)

**Don't count the days,  
Make the days count!**

## Meetings & Clubs

**Please note:** Although some physical meetings for clubs and activities are canceled, some may be meeting in person or, in a hybrid mode, both in person and online. OLLI events and activities meeting online bear the identification "Z" in their course or event number (except clubs; you may need to check the [OLLI calendar](#) and daily schedule email for location and other event information). Refer to the university's [coronavirus website](#) for official university updates.

The following list covering the next two weeks is extracted for your convenience from the master online calendar maintained by the office. The list is accurate as of mid-week but for the most up-to-date information, please view the latest forecast of coming events on our website ([News/OLLI Calendar](#)). *Note: All OLLI members are welcome at, and encouraged to attend, meetings of the Board of Directors, committees and resource groups, kick-off coffees, etc. The OLLI office has sent (or will send) emails with links and meeting passwords to club members; you may also log in at the [member portal](#) and click on ZOOM CLASS LINKS.*

Sat Jun 17	10:30 am 1:00 pm	Tai Chi Club Personal Computer User Group
Mon Jun 19	9:30 am	What's in the Daily News?
Tue Jun 20	1:00 pm 4:30 pm	Stay Active and Independent for Life Tai Chi Club
Wed Jun 21	9:30 am 4:00 pm	Walk & Talk Club Spanish Club
Thu Jun 22	4:30 pm	Tai Chi Club
Fri Jun 23	9:30 am 9:30 am 11:00 am 12:00 noon 1:00 pm	Mah Jongg Club Craft and Conversation Homer, etc. Photography Club Stay Active and Independent for Life
Sat Jun 24	10:30 am	Tai Chi Club
Mon Jun 26	10:00 am	Bridge Club

Tue Jun 27	9:00 am 1:00 pm 4:30 pm	Walk & Talk Club Stay Active and Independent for Life Tai Chi Club
Wed Jun 28	11:00 am 2:00 pm 4:00 pm 4:00 pm	Spanish Club Memoir and More Writing Group Mah Jongg Club Theater Lovers' Group
Thu Jun 29	4:30 pm 6:00 pm	Tai Chi Club Ethnic Eats Club
Fri Jun 30	9:30 am 11:00 am 1:00 pm	Craft and Conversation Homer, etc. Stay Active and Independent for Life
Sat Jul 1	10:30 am	Tai Chi Club

[Back to Top of Page](#)

## About OLLI E-News

OLLI E-News was created by Rod Zumbro, who served as its editor from 2005 to 2013.

### Editorial Staff

Chief Editor: Paul Van Hemel

Associate Editor: David Gundry

Weekly Editor Team: David Gundry, John Nash, Sheri Siesseger, Paul Van Hemel

Proofreaders: Rebecca Jann, Susan Van Hemel, Linda Randall, Tom Appich, Jane Hassell

**Submissions:** Members are encouraged to submit letters to the editor, letters to Ms. Ollie Ettakit (on etiquette matters), OLLI-related news items, articles, and photos. Submit material to: [ollienewseditor@gmail.com](mailto:ollienewseditor@gmail.com).

**Deadline:** Tuesday, 6:00, for that week's issue (Monday, 6:00, for letters to the editor); early submissions are greatly appreciated. Please limit articles to about 250 words.

**Note:** You can view past issues of *OLLI E-News* on the DocStore. To search the content of issues, use Search Our Site or put your search term in Google followed by "site:olli.gmu.edu/" without the quotes.

[Back to Top of Page](#)

Notice: You received this newsletter because either you are a current OLLI member or you have been provided a courtesy copy. If you are an OLLI member who did not renew your membership, you can continue to receive our newsletter by emailing the office at [olli@gmu.edu](mailto:olli@gmu.edu) with your request. If someone forwarded this newsletter to you and you'd like to receive it each week, please email the office and ask to be added to the courtesy-copy list.

Copyright 2023 Osher Lifelong Learning Institute at George Mason University

Osher Lifelong Learning Institute at George Mason University, 4210 Roberts Rd., Fairfax, VA 22032-1028